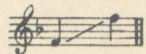
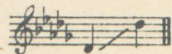


N. 1. in F



49676

N. 2. in D Flat
(Original)



49677

N. 3. in B Flat



49678

SUNG BY MISS HAMLIN

HOW DO I LOVE THEE

SONG

WORDS SELECTED FROM „SONNETS„ FROM THE PORTUGUESE

BY

ELIZABETH BARRETT BROWNING

MUSIC BY

MAUDE VALÉRIE WHITE

Price 2/= Net (c)

POPULAR SONGS BY THE SAME COMPOSER:

„The Devout lover„ — Net 2/- || „When passions trance„ — Net 2/-
„Go lovely rose„ — . 2/ || „There be none of beauty's daughters„ . 2/-

All rights reserved

Ent. Sta. Hall.

G. RICORDI & CO.

265, Regent Street
LONDON. W.

AND AT MILAN-ROME-NAPLES-PALERMO-PARIS-LEIPZIG-BUENOS-AYRES AND NEW-YORK

This song may be sung in public without payment of any fee.

(Printed in Italy)

FRED WALKER,
20, North Street,
STATION ROAD,
OPPOSITE THE CLAYTON CLUB.

Maude Valérie White



HOW DO I LOVE THEE

SONG

Music by
MAUDE VALÉRIE WHITE

N.º1

Quand tout autour de l'homme chancelle, vacille, tremble et s'obscurcit dans les lointaines obscurités de l'inconnu, quand le monde n'est plus que fiction ou féerie et l'univers que chimère, quand tout l'édifice des idées s'évanouit en fumée et que toutes les réalités se convertissent en doute, quel point fixe peut encore rester à l'homme? C'est le cœur fidèle d'une femme.

H. F. AMIEL.

ANDANTE ESPRESSIVO

arioso *p*

The piano introduction consists of two staves. The right hand features a series of chords and melodic lines, while the left hand plays a steady eighth-note accompaniment. The tempo is marked 'ANDANTE ESPRESSIVO' and the mood is 'arioso'. The piece concludes with a piano (*p*) dynamic.

VOICE

How How...do I love thee Let me count the

The first line of the song features a vocal melody with a triplet of eighth notes on 'How...do I'. The piano accompaniment consists of chords in the right hand and eighth-note patterns in the left hand.

ways..... I love thee to the depth and breadth and height, My

The second line continues the vocal melody with a triplet of eighth notes on 'I love thee'. The piano accompaniment remains consistent with the first line.

G. RICORDI & Co's Copyright.

All rights of execution, reproduction, translation and transcription are strictly reserved.

49676

con tenerezza

soul.....can reach..... I love thee I love..... thee

rall.

pure - - - ly I

p arioso

espressivo

love thee to..... the le - - vel of e - - very days most qui - et

espressivo

ben marcata la melodia

cres:..... *f*

need..... I love thee with the breath of all my life

cres:..... *f*

Detailed description: This system contains the first two lines of music. The top line is a vocal melody in G major, starting with a half note G4, followed by quarter notes A4, B4, C5, D5, E5, F#5, and G5. The lyrics are "need..... I love thee with the breath of all my life". The piano accompaniment consists of two staves. The right hand plays a rhythmic pattern of eighth notes, and the left hand plays a bass line with some chords. Both parts include a crescendo marking and a forte (f) dynamic marking. A triplet of eighth notes (F#5, G5, A5) is marked with a '3' above it.

rall.

and..... If God choose I shall but love thee love thee bet - - - ter

rall.

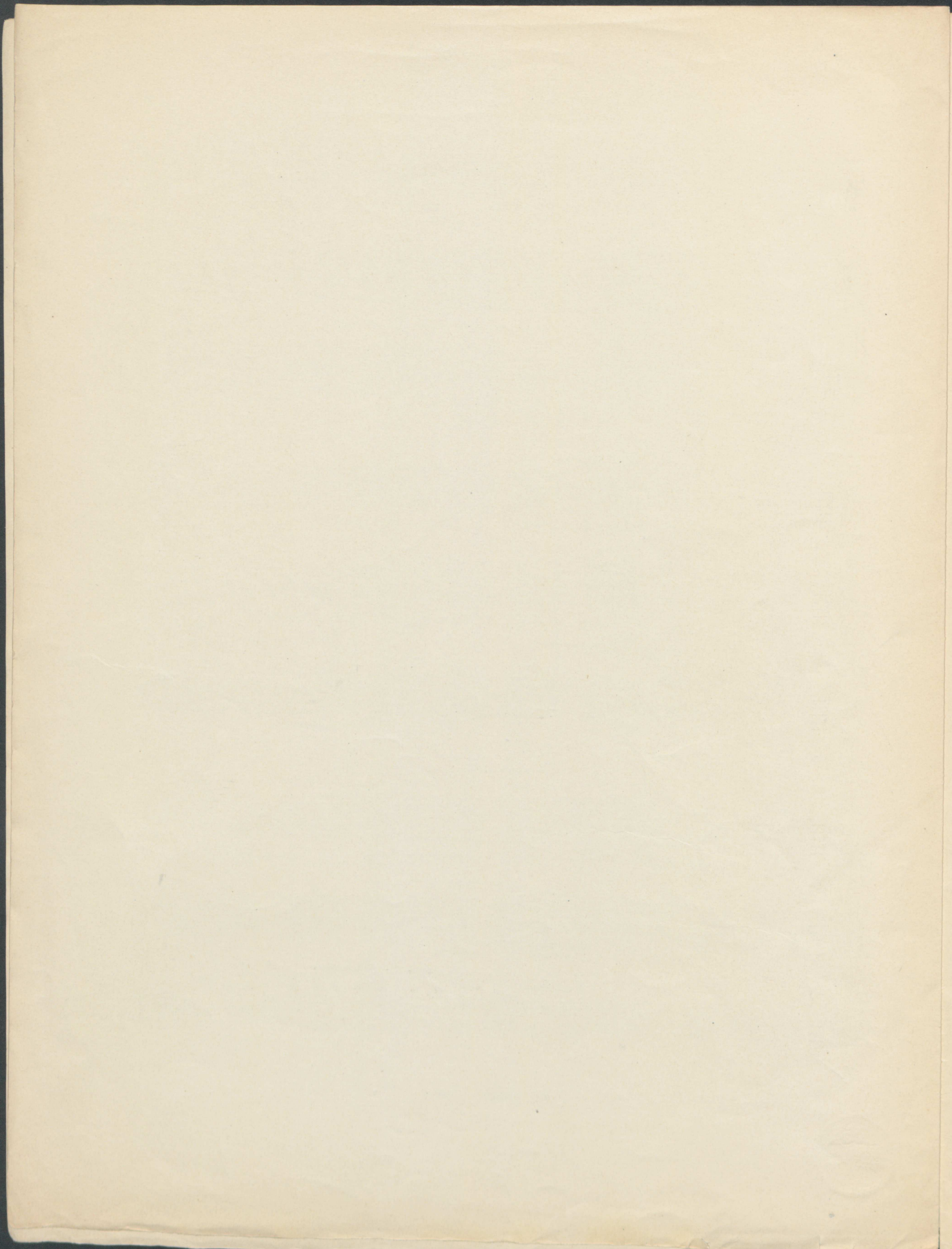
Detailed description: This system contains the second two lines of music. The vocal melody continues with the lyrics "and..... If God choose I shall but love thee love thee bet - - - ter". The piano accompaniment continues with similar rhythmic patterns. Both parts include a 'rall.' (rallentando) marking. The system concludes with a fermata over the final notes.

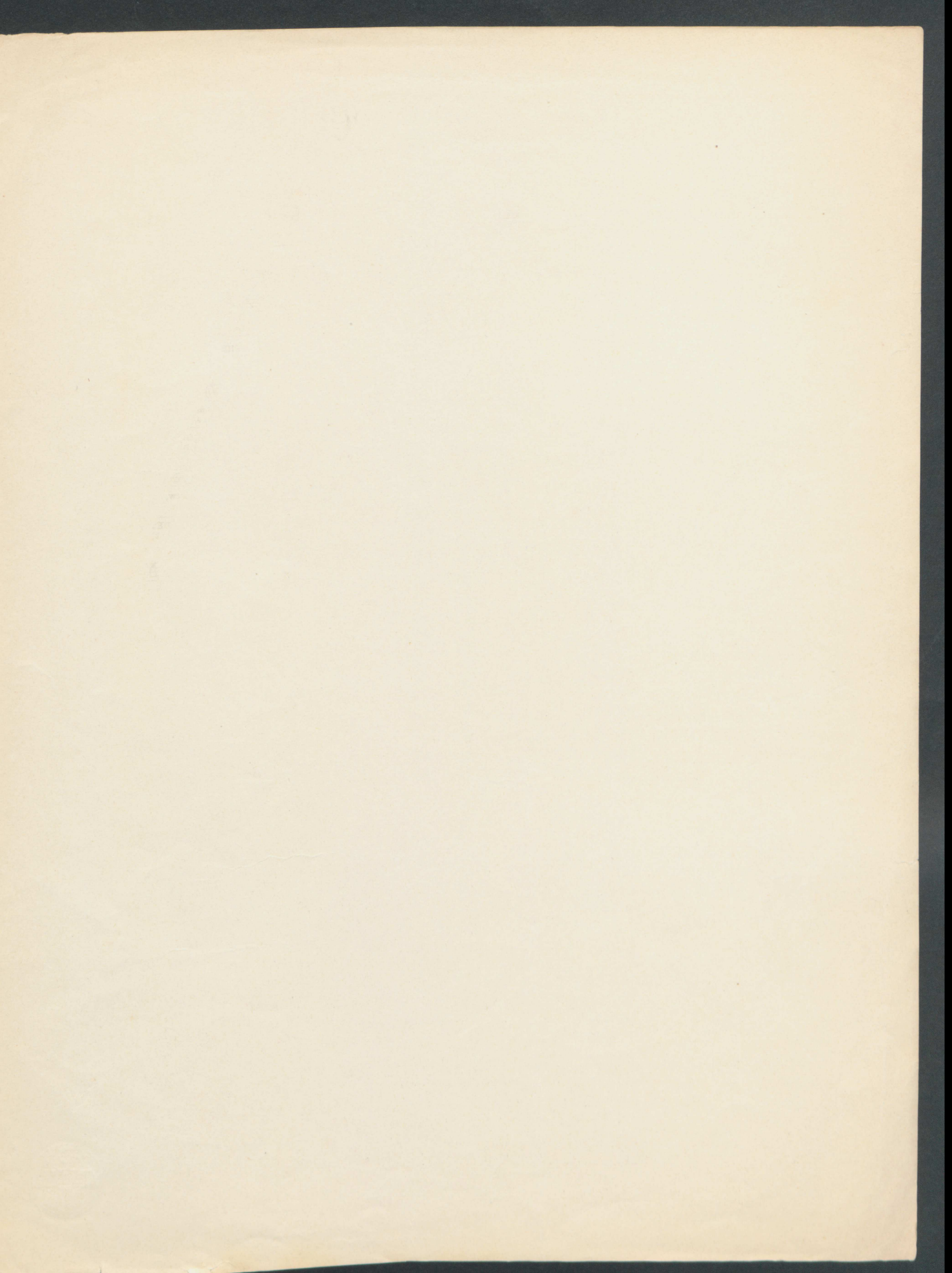
p *rall.*

af - - - ter death.....

p *rall.*

Detailed description: This system contains the final two lines of music. The vocal melody concludes with the lyrics "af - - - ter death.....". The piano accompaniment features a 'p' (piano) dynamic marking and a 'rall.' marking. The system ends with a double bar line.





G. RICORDI & CO'S MOST POPULAR SONGS.

FOR EVER AND FOR EVER!

VIOLET FANE. F. PAOLO TOSTI.
Assai moderato
 I think of all... thou art to me... I dream of
Sung by Mr Santley.

THE LAST DREAM.

F. E. WEATHERLY. F. H. COWEN.
Mod.^{to}
 His old white head is bending low, A cross
Composed expressly for Miss Grace Dumban.

MATTINATA.

MOWBRAY MARRAS. F. PAOLO TOSTI.
In G, F (D to F) and E♭.
 Ma-ry the last star trembling a-bove thee
Sung by Mr. Ben Davies.

ONLY YOU

R. H. ELKIN. P. A. TIRINDELLI.
In D♭, C (E to F) and B♭.
 As a captive in prison vault May see a passing ray from
Sung by Signor Caruso

SLEEP ON, DEAR LOVE.

H. L. D ARCY JAXONE. CIRO PINSUTI.
In B♭ (E♭ to F) and A♭.
 Sleep while the moonbeams play hide and seek; Mid
Sung by Miss Jose Sherrington.

TO THE ANGELS.

PERCY PINKERTON. N. ZARDO.
In A♭, G, F (C to F) and E♭.
 An-gels of glo-ry! Quit your fair ho-mi-nions
Sung by Mme E'la Russell.

A SONG OF SLEEP.

Words and Music by LORD HENRY SOMERSET.
In F (F to F) and D.
 Sleep, darling, sleep, the daylight Dies down in the crimson
Sung by Mr. Jack Robertson.

OVER THE HEATHER

HAROLD BOULTON. EDWARD GERMAN.
In G (D to E)
 Over the hea ther and out and away With a fresh wind

LITTLE WATERCRESS.

F. E. WEATHERLY. L. DENZA.
In D minor, C minor (D to F) and B♭ minor.
 Buy some watercress, my lady Buy a little bunch I pray,
By the composer of "Come to me" etc.

AT THE MAKING OF THE HAY.

S. M. PECK. LIZA LEHMANN.
In D, C (D to G) and A.
 When the whip-poor-wills are call-ing, And the
Sung by Mme de Fontblaque.

LOVE ME!

GITHA SOWERBY. F. PAOLO TOSTI.
In B♭, A♭ (E♭ to E♭) and F.
 Love me for the day of days, When your eyes first saw me

QUEEN OF THE EARTH.

H. L. D ARCY JAXONE. CIRO PINSUTI.
In D (E to A) and B♭.
And. mod.
 "An angel in all but name is she,.... O'er
Sung by Mr Reginald Groome.

UNLESS.

Mrs. BROWNING. L. CARACCILOLO.
In C, B♭, A♭ (A♭ to F) and G.
Andante
 Un-less you can think when the song is
Sung by Miss Carlotta Elliott.

A SONG OF ROSES.

E. TESCHEMACHER. ELLEN WRIGHT.
In F, E♭ (F to F) and C.
 I sing a song of ro-ses, Yellow, red and white
By the composer of "Violets!"

SPEAK!

CLIFTON BINGHAM. F. PAOLO TOSTI.
In F, E♭ (D to E♭) and D♭.
 Speak with those eyes of thine to me, love, Speak
By the composer of "For ever and for ever!"

PARTED

F. E. WEATHERLY. F. PAOLO TOSTI.
In B♭, A♭ (E♭ to F) and F.
Allegretto
 Dearest our day is o-ver, Ended the dream divine

I COME TO YOU.

E. TESCHEMACHER. NOEL JOHNSON.
In E♭ (C to E♭)
Andante a tempo
 Since you have call'd in tender tones to me, Since in your

I AM NOT FAIR

ETHEL CLIFFORD. F. PAOLO TOSTI.
In A, G (D to E) and F.
Lento
 I am not fair, But you have thought me so,.... And

ROSES IN JUNE.

CLIFTON BINGHAM. EDWARD GERMAN.
In G, F (D to F) and D.
Non troppo adagio
 There's a blue in the sky beyond words, And new

ABSENT

CATHERINE YOUNG GLEN. P. A. TIRINDELLI.
In D♭, C (C to E) and E♭.
Molto espressivo
 Sometimes, be-tween the long shadows on the

THEN AND NOW.

ELPHINSTONE THORPE. PERCY ELLIOTT
In A (C to E)
 In days of old my life was full of sorrow And

GO LOVELY ROSE!

E. WALLER. MAUDE V. WHITE.
In E (D♯ to F) and D♯.
And. arioso
 Go lovely Rose! Tell her that wastes her time
By the composer of "Absent yet present!"

GOOD-BYE!

G. J. WHYTE-MELVILLE. F. PAOLO TOSTI.
In A♭, G, F (C to F) and E♭.
Andantino
 Fall-ing leaf, and fad-ing tree,
Sung by Miss Grace Dumban.

COME TO ME.

W. BOOSEY. L. DENZA.
In D, C, B♭ (C to F) and A♭.
And. sost.
 Neath the silver silence of the moon,....
Sung by Mme Schütler, and Signor Villa.

THE DEVOUT LOVER.

W. H. POLLOCK. MAUDE V. WHITE.
In F (E to F) and E♭.
Andantino
 It is not mine to sing the stately grace,
Sung by Mr Arthur Oswald.

IF I ONLY KNEW!

MAURICE POND. LIZA LEHMANN.
In E♭, D♭ (C to F) and C.
Simply
 If I on-ly knew, When I sent to you

WEEP NOT, BELOVED.

DOUGLAS M. WEBB. FRANK LAMBERT.
In D (B to E)
Andante
 Weep not Be-lo-ved, tho' we needs must part

VIOLETS.

JULIAN FANE. ELLEN WRIGHT
In A♭, F (D to F) and E♭.
 Ev-ry morn I send thee Vio-lets,
Sung by M^{lle} de S' André.

REMEMBRANCE.

H. E. GARDEN. NOEL JOHNSON.
In A♭ (E♭ to G) and F.
Larghetto
 You gave me Rosemary and bade me know

BIANCA.

F. E. WEATHERLY. TITO MATTEI.
In A♭, G (C♯ to G) and F.
Maestoso
 Bianca! Ca-rissi-ma! To-night, to-night, we
Sung by Mr. Ben Davies.

A SONG OF MAY.

A. C. SWINBURNE. LORD HENRY SOMERSET.
In F, E♭ (E to F) and D.
Andante
 In the greenest growth of the maytime, I
By the composer of "A Song of Sleep."

A SONG OF WAITING

E. TESCHEMACHER. ELLEN WRIGHT.
In G, F (C to F) and E♭.
 Wait for me as the stars wait for the night To

LA SERENATA.

(THE SERENADE)
 THEO. MARZIALS. In F (E to F) E♭ and C. F. PAOLO TOSTI.
In 80
 Lightly My gentlest numbers, My fairest songs and
Sung by Mr Durward Lely.

PRICE NET TWO SHILLINGS EACH, POST-FREE.

LONDON: G. RICORDI & CO., 265, REGENT STREET, W.